



SACHSEN FAHNEN

vispronet®

DISPLAY WALLS



INFORM
CREATE
ORDER

vispro®
design



TABLE OF CONTENTS



vispronet[®]

DISPLAY WALL BASIC	2
DISPLAY WALL BASIC, DOUBLE SIDED	4
DISPLAY WALL BASIC CURVED	6
DISPLAY WALL BASIC DOUBLE ARCH, MESH	8
DISPLAY WALL BASIC DOUBLE ARCH, TEXTILE	10
DISPLAY WALL Q-FRAME [®]	12
DISPLAY WALL Q-FRAME [®] LED	14
ACCESSORIES	16
NOTES	19

DISPLAY WALL BASIC



SHORT



LONG

- Inexpensive wall display
- Segments made of aluminum hollow profiles
- Button spring system: no additional tools needed
- Print available in short and long form according to your needs

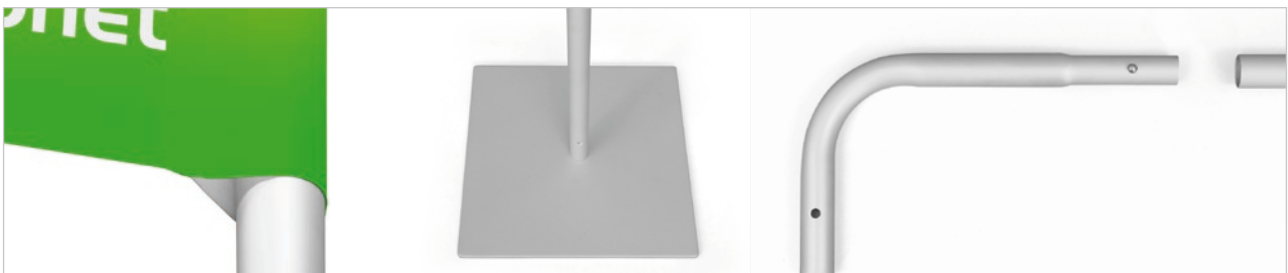
DISPLAY WALL BASIC



vispronet®



Frame	<ul style="list-style-type: none"> · Aluminum frame made from easily pluggable aluminum hollow profiles (angle and rod segments), locking with spring buttons · Tube diameter 25 mm, profile thickness 1.5 mm · Base elements: 2 floor plates 30 x 30 cm/4.3 kg (steel, silver-coloured powder-coated) 																							
Druckteil	<p>Material:</p> <ul style="list-style-type: none"> · Dekoflag H SE, approx. 120 g/m² · Multisol® D SE GREEN Plus, approx. 205 g/m² oder Multisol® X SE, approx. 200 g/m² · Multisol® X Opak SE, matt (opaque), approx. 250 g/m² <p>Finish:</p> <ul style="list-style-type: none"> · Printed on one side (with hemstitch), motif appears as a mirror image on the back 																							
Size	<table border="1"> <thead> <tr> <th>System size (W x H):</th> <th>Display Wall Basic, short Print surface (W x H)</th> <th>Display Wall Basic, long Print surface (W x H)</th> </tr> </thead> <tbody> <tr> <td>232 x 177 cm</td> <td>232 x 140 cm</td> <td>232 x 177 cm</td> </tr> <tr> <td>232 x 215 cm</td> <td>232 x 140 cm</td> <td>232 x 215 cm</td> </tr> <tr> <td>232 x 245 cm</td> <td>232 x 190 cm</td> <td>232 x 240 cm</td> </tr> <tr> <td>300 x 177 cm</td> <td>300 x 140 cm</td> <td>300 x 177 cm</td> </tr> <tr> <td>300 x 215 cm</td> <td>300 x 140 cm</td> <td>300 x 215 cm</td> </tr> <tr> <td>300 x 245 cm</td> <td>300 x 190 cm</td> <td>300 x 240 cm</td> </tr> </tbody> </table>			System size (W x H):	Display Wall Basic, short Print surface (W x H)	Display Wall Basic, long Print surface (W x H)	232 x 177 cm	232 x 140 cm	232 x 177 cm	232 x 215 cm	232 x 140 cm	232 x 215 cm	232 x 245 cm	232 x 190 cm	232 x 240 cm	300 x 177 cm	300 x 140 cm	300 x 177 cm	300 x 215 cm	300 x 140 cm	300 x 215 cm	300 x 245 cm	300 x 190 cm	300 x 240 cm
System size (W x H):	Display Wall Basic, short Print surface (W x H)	Display Wall Basic, long Print surface (W x H)																						
232 x 177 cm	232 x 140 cm	232 x 177 cm																						
232 x 215 cm	232 x 140 cm	232 x 215 cm																						
232 x 245 cm	232 x 190 cm	232 x 240 cm																						
300 x 177 cm	300 x 140 cm	300 x 177 cm																						
300 x 215 cm	300 x 140 cm	300 x 215 cm																						
300 x 245 cm	300 x 190 cm	300 x 240 cm																						
Delivery content	<ul style="list-style-type: none"> · Print, rod segments in a bag with pull loop and base plates including transport bag 																							



All sizes are approximate. As we are constantly developing our products we reserve the right of changing technical issues and dimensional deviations.

DISPLAY WALL BASIC DOUBLE SIDED



vispronet®



SHORT

LONG

- Standard double sided wall display with good value for money
- Printed easily with same or different designs on both sides
- Interchangeable
- Various standard sizes available in short or long form

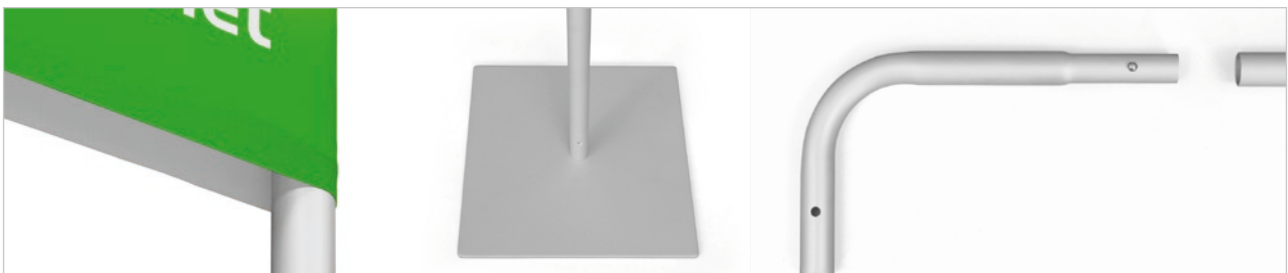
DISPLAY WALL BASIC DOUBLE SIDED



vispronet®



Frame	<ul style="list-style-type: none"> · Aluminum frame made from easily pluggable aluminum hollow profiles (angle and rod segments), locking with spring buttons · Tube diameter 25 mm, profile thickness 1.5 mm · Base elements: 2 floor plates 30 x 30 cm/4.3 kg (steel, silver-coloured powder-coated) 																							
Print	<p>Material:</p> <ul style="list-style-type: none"> · Dekoflag H SE, approx. 120 g/m² · Multisol® D SE GREEN Plus, approx. 205 g/m² oder Multisol® X SE, approx. 200 g/m² · Multisol® X Opak SE, matt (opaque), approx. 250 g/m² <p>Finish:</p> <ul style="list-style-type: none"> · Printed on both sides (with same or different design), as a cover 																							
Size	<table border="1"> <thead> <tr> <th>System size (W x H):</th> <th>Display Wall Basic, short Print surface (W x H)</th> <th>Display Wall Basic, long Print surface (W x H)</th> </tr> </thead> <tbody> <tr> <td>232 x 177 cm</td> <td>232 x 150 cm</td> <td>232 x 177 cm</td> </tr> <tr> <td>232 x 215 cm</td> <td>232 x 150 cm</td> <td>232 x 215 cm</td> </tr> <tr> <td>232 x 245 cm</td> <td>232 x 200 cm</td> <td>232 x 245 cm</td> </tr> <tr> <td>300 x 177 cm</td> <td>300 x 150 cm</td> <td>300 x 177 cm</td> </tr> <tr> <td>300 x 215 cm</td> <td>300 x 150 cm</td> <td>300 x 215 cm</td> </tr> <tr> <td>300 x 245 cm</td> <td>300 x 200 cm</td> <td>300 x 245 cm</td> </tr> </tbody> </table>			System size (W x H):	Display Wall Basic, short Print surface (W x H)	Display Wall Basic, long Print surface (W x H)	232 x 177 cm	232 x 150 cm	232 x 177 cm	232 x 215 cm	232 x 150 cm	232 x 215 cm	232 x 245 cm	232 x 200 cm	232 x 245 cm	300 x 177 cm	300 x 150 cm	300 x 177 cm	300 x 215 cm	300 x 150 cm	300 x 215 cm	300 x 245 cm	300 x 200 cm	300 x 245 cm
System size (W x H):	Display Wall Basic, short Print surface (W x H)	Display Wall Basic, long Print surface (W x H)																						
232 x 177 cm	232 x 150 cm	232 x 177 cm																						
232 x 215 cm	232 x 150 cm	232 x 215 cm																						
232 x 245 cm	232 x 200 cm	232 x 245 cm																						
300 x 177 cm	300 x 150 cm	300 x 177 cm																						
300 x 215 cm	300 x 150 cm	300 x 215 cm																						
300 x 245 cm	300 x 200 cm	300 x 245 cm																						
Delivery content	<ul style="list-style-type: none"> · Print, rod segments in a bag with pull loop and base plates including transport bag 																							



All sizes are approximate. As we are constantly developing our products we reserve the right of changing technical issues and dimensional deviations.

DISPLAY WALL BASIC CURVED (TEXTILE)



- Display wall with modern curved front
- Ideal room divider or trade fair stand demarcation
- Printable on one or both sides
- Available in numerous sizes



DISPLAY WALL BASIC CURVED (TEXTILE)



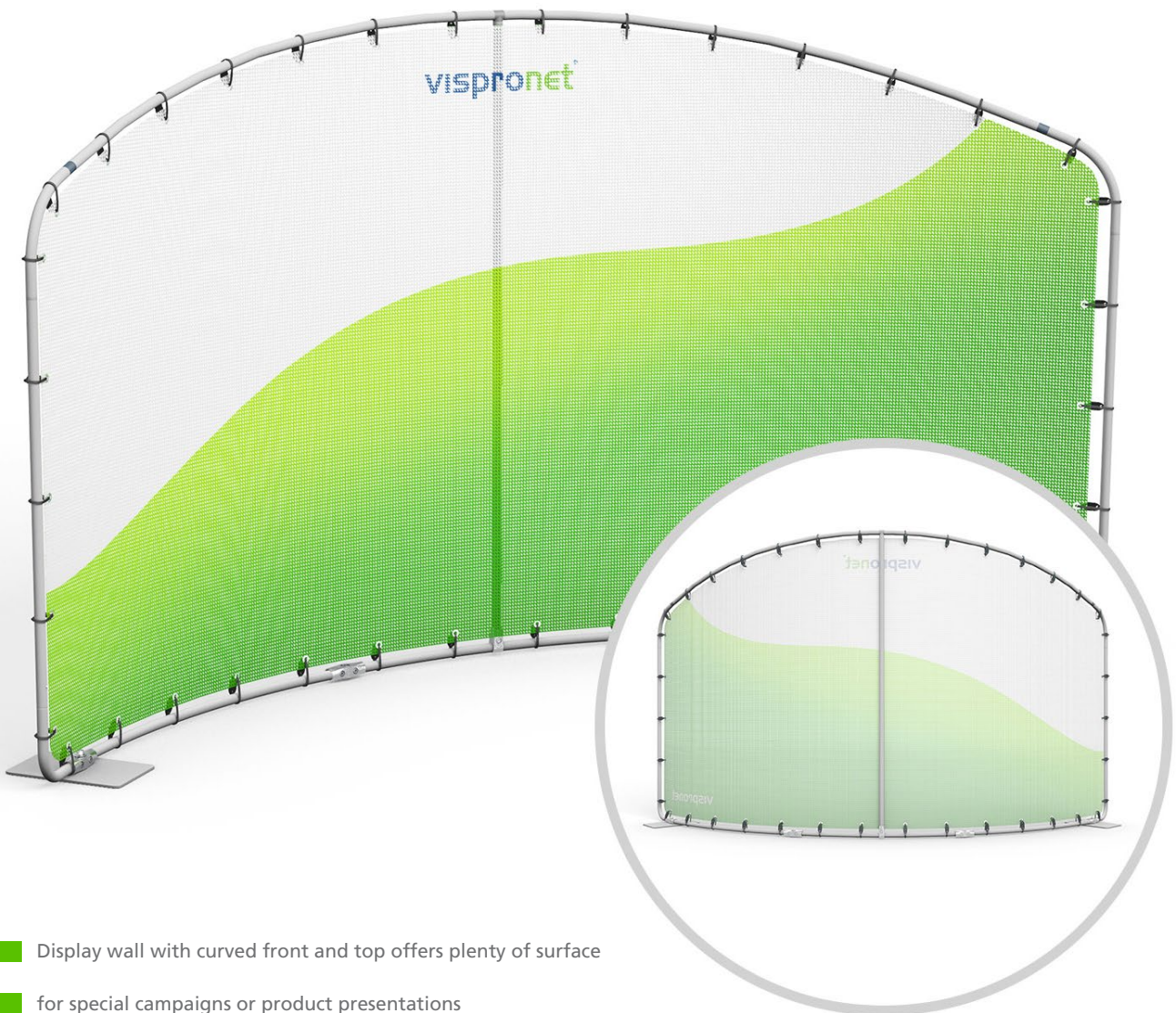
Frame	<ul style="list-style-type: none"> · Aluminum frame made from easily pluggable aluminum hollow profiles (angle and rod segments), locking with spring buttons · Tube diameter 25 mm, profile thickness 1.5 mm · Base elements: 2 floor panels 18 x 30 cm/2.3 kg (steel, silver-coloured powder-coated) 	
Print	<p>Material:</p> <ul style="list-style-type: none"> · Multisol® X SE, approx. 200 g/m² · Multisol® X Opak SE, matt (opaque), approx. 250 g/m² <p>Finish:</p> <ul style="list-style-type: none"> · Printed on one side (white back) or printed on both sides (with same or different design) · Assembled inverted, lower edge cut and fitted with velcro 	
Size		
	System size (W x H x D):	Print surface (W x H):
	230 x 130 x 30 cm 230 x 170 x 30 cm 230 x 200 x 30 cm 230 x 235 x 30 cm	237 x 131,5 cm 237 x 171,5 cm 237 x 200 cm 237 x 235 cm
	310 x 130 x 56 cm 310 x 170 x 56 cm 310 x 200 x 56 cm 310 x 235 x 56 cm	337 x 131,5 cm 337 x 171,5 cm 337 x 200 cm 337 x 235 cm
	385 x 130 x 87 cm 385 x 170 x 87 cm 385 x 200 x 87 cm 385 x 235 x 87 cm	433 x 131,5 cm 433 x 171,5 cm 433 x 200 cm 433 x 235 cm
Delivery content	<ul style="list-style-type: none"> · Print, rod segments in a bag with pull loop and base plates including transport bag 	

All sizes are approximate. As we are constantly developing our products we reserve the right of changing technical issues and dimensional deviations.

DISPLAY WALL BASIC DOUBLE ARCH, MESH

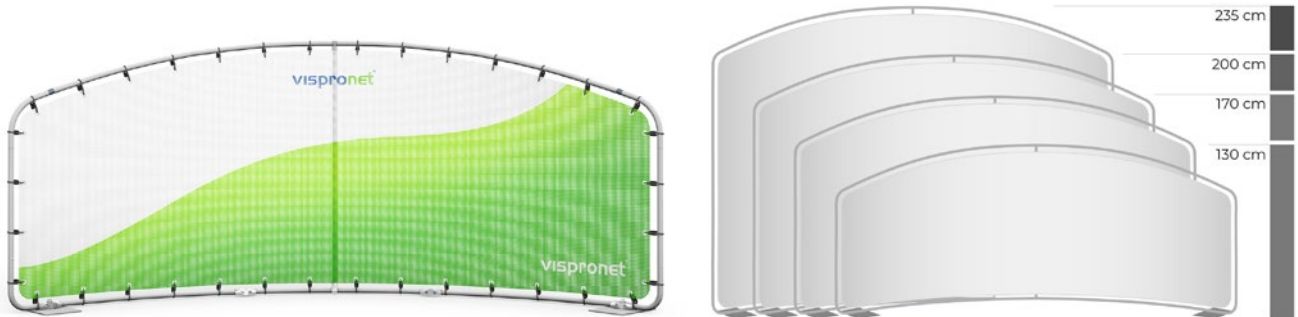


vispronet®



- Display wall with curved front and top offers plenty of surface
- for special campaigns or product presentations
- Easy mesh banner attachment to aluminum frame with elastic straps
- Suitable for indoor and short-term outdoor use

DISPLAY WALL BASIC DOUBLE ARCH, MESH



Frame	<ul style="list-style-type: none"> · Aluminum frame made of hollow profiles that can be easily assembled together (angle and rod segments), locking with spring buttons, aluminum connectors · Tube diameter 25 mm, profile thickness 1.5 mm · Base elements: 2 floor plates 18 x 30 cm/2.3 kg (steel, silver-coloured powder-coated) 											
Print	<p>Material:</p> <ul style="list-style-type: none"> · Vinyl Mesh Basic B1 coated on both sides, approx. 300 g/m² <p>Finish:</p> <ul style="list-style-type: none"> · Cut all around and fitted with eyelets approx. every 23 cm 											
Size	<table border="1"> <thead> <tr> <th>System size (W x H x D):</th> <th>Print surface (W x H):</th> </tr> </thead> <tbody> <tr> <td>310 x 130 x 56 cm</td> <td>321 x 121 cm</td> </tr> <tr> <td>310 x 170 x 56 cm</td> <td>321 x 161 cm</td> </tr> <tr> <td>310 x 200 x 56 cm</td> <td>321 x 191 cm</td> </tr> <tr> <td>310 x 235 x 56 cm</td> <td>321 x 226 cm</td> </tr> </tbody> </table>		System size (W x H x D):	Print surface (W x H):	310 x 130 x 56 cm	321 x 121 cm	310 x 170 x 56 cm	321 x 161 cm	310 x 200 x 56 cm	321 x 191 cm	310 x 235 x 56 cm	321 x 226 cm
System size (W x H x D):	Print surface (W x H):											
310 x 130 x 56 cm	321 x 121 cm											
310 x 170 x 56 cm	321 x 161 cm											
310 x 200 x 56 cm	321 x 191 cm											
310 x 235 x 56 cm	321 x 226 cm											
Delivery content	<ul style="list-style-type: none"> · Print, rod segments and connectors in a bag with pull loop and base plates incl. transport bag, elastic straps with click fastener 											

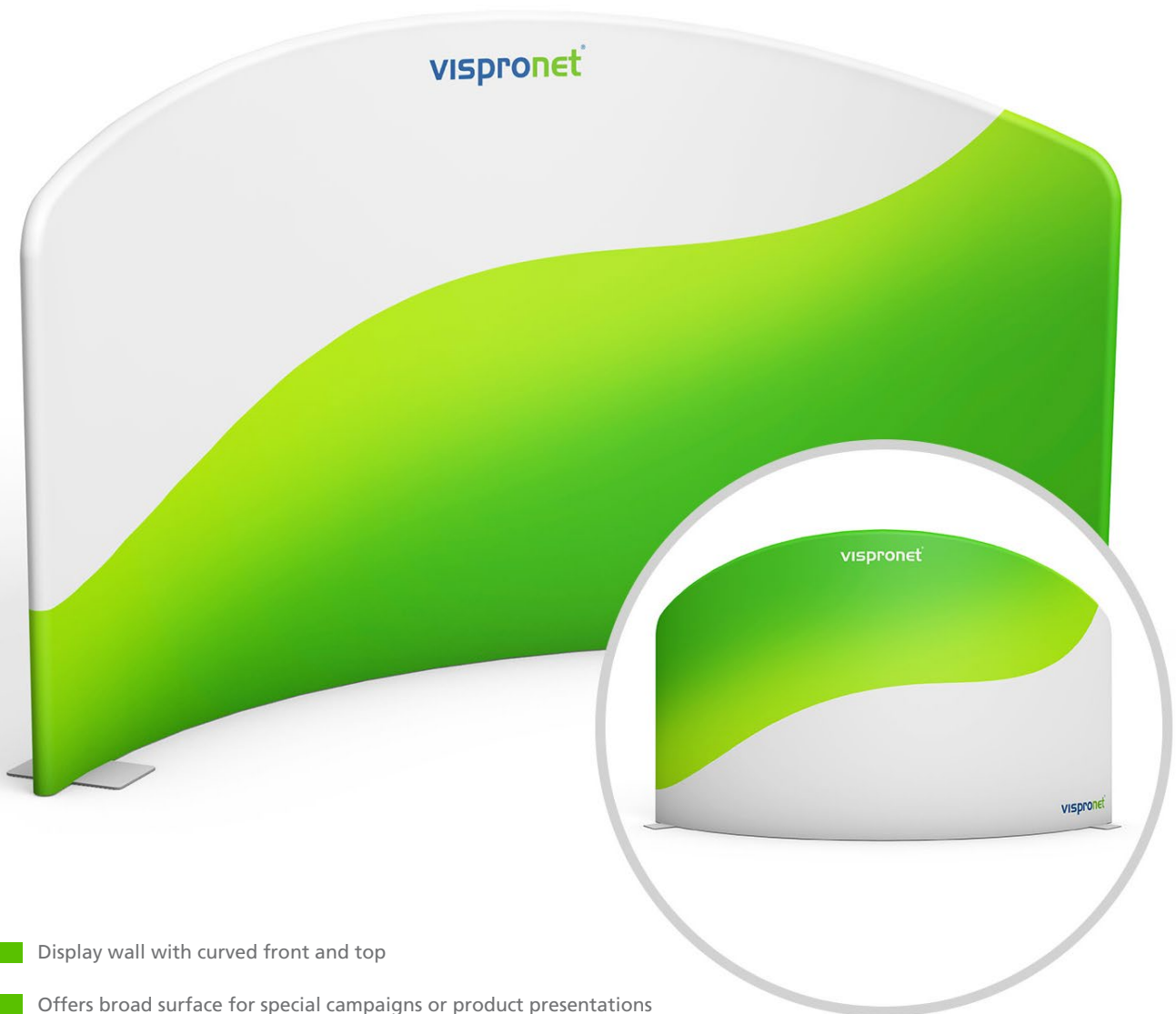


All sizes are approximate. As we are constantly developing our products we reserve the right of changing technical issues and dimensional deviations.

DISPLAY WALL BASIC DOUBLE ARCH, TEXTILE



vispronet®



- Display wall with curved front and top
- Offers broad surface for special campaigns or product presentations
- Quick assembly, spring button system
- One-sided printing (rear side white) or double-sided printing (rear side with custom design) possible

DISPLAY WALL BASIC

DOUBLE ARCH, TEXTILE



Frame	<ul style="list-style-type: none"> · Aluminum frame made of hollow profiles that can be easily assembled together (angle and rod segments), locking with spring buttons, aluminum connectors · Tube diameter 25 mm, profile thickness 1.5 mm · Base elements: 2 floor plates 18 x 30 cm/2.3 kg (steel, silver-coloured powder-coated) 											
Print	<p>Material:</p> <ul style="list-style-type: none"> · Multisol® X SE, approx. 200 g/m² or Multisol® X Opak SE, approx. 250 g/m² <p>Finish:</p> <ul style="list-style-type: none"> · One-sided print, backside white: double-layer design without insert, turned over, lower edge cut and fitted with velcro · Double-sided print, design on the front and back: double-layer design (with an insert for Multisol® X SE, without an insert for Multisol® X Opak SE), turned over, lower edge cut and fitted with velcro 											
Size	<table border="1"> <thead> <tr> <th>System size (W x H x D):</th> <th>Print surface (W x H):</th> </tr> </thead> <tbody> <tr> <td>310 x 130 x 56 cm</td> <td>332 x 130 cm</td> </tr> <tr> <td>310 x 170 x 56 cm</td> <td>332 x 170 cm</td> </tr> <tr> <td>310 x 200 x 56 cm</td> <td>332 x 200 cm</td> </tr> <tr> <td>310 x 235 x 56 cm</td> <td>332 x 233,5 cm</td> </tr> </tbody> </table>		System size (W x H x D):	Print surface (W x H):	310 x 130 x 56 cm	332 x 130 cm	310 x 170 x 56 cm	332 x 170 cm	310 x 200 x 56 cm	332 x 200 cm	310 x 235 x 56 cm	332 x 233,5 cm
System size (W x H x D):	Print surface (W x H):											
310 x 130 x 56 cm	332 x 130 cm											
310 x 170 x 56 cm	332 x 170 cm											
310 x 200 x 56 cm	332 x 200 cm											
310 x 235 x 56 cm	332 x 233,5 cm											
Delivery content	<ul style="list-style-type: none"> · Print, rod segments and connectors in a bag with pull loop and base plates including transport bag 											



All sizes are approximate. As we are constantly developing our products we reserve the right of changing technical issues and dimensional deviations.

DISPLAY WALL Q-FRAME®



- Stable and particularly secure, free-standing display wall made of high-quality aluminum profiles
- Same or different design on the front and back possible
- Fastening of prints with flat piping, stand incl. 2 feet

DISPLAY WALL Q-FRAME®



vispronet®



Frame	<ul style="list-style-type: none"> · High-quality aluminum frame, silver anodised, frame depth: 50 mm · 2 different feet variants (angled feet or side feet) 			
Print	<p>Material:</p> <ul style="list-style-type: none"> · Multisol® X SE, approx. 200 g/m² or Multisol® X Opak SE, approx. 250 g/m² <p>Finish:</p> <ul style="list-style-type: none"> · Cut all around and fitted with flat piping for attachment to the aluminum frame 			
Size	Portrait format (W x H)			
System height	40 - 220 cm		221 - 310 cm	
System width	40 - 120 cm	121 - 310 cm	40 - 120 cm	121 - 310 cm
Foot variant	2 WinkelfüÙe	2 SeitenfüÙe	2 SeitenfüÙe	2 SeitenfüÙe
	Landscape format (W x H)			
System height	40 - 220 cm		221 - 310 cm	
System width	40 - 120 cm	121 - 700 cm	40 - 120 cm	121 - 700 cm
Foot variant	2 FlachfüÙe	2 SeitenfüÙe	2 SeitenfüÙe	2 SeitenfüÙe
Delivery content	<ul style="list-style-type: none"> · Print, frame profiles pre-assembled with corner connectors and 2 feet (for self-assembly) 			



All sizes are approximate. As we are constantly developing our products we reserve the right of changing technical issues and dimensional deviations.

DISPLAY WALL Q-FRAME® LED



- Illuminated advertising display with feet
- Bright, energy-efficient power LEDs for even illumination
- Particularly secure attachment of prints with flat piping
- Easy and quick change of prints

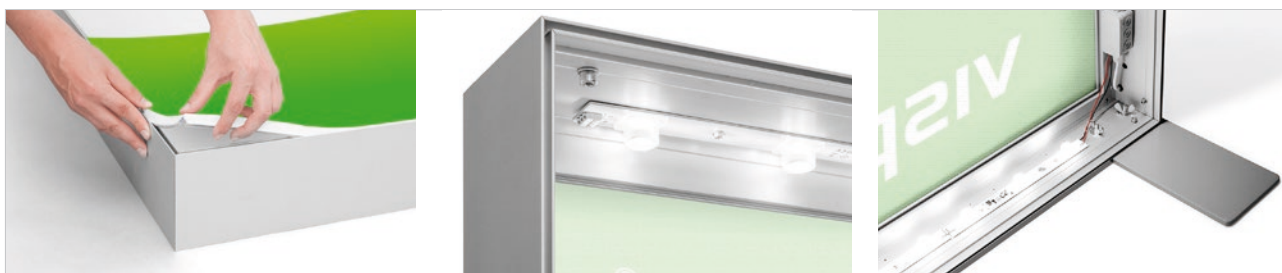
DISPLAY WALL Q-FRAME® LED¹⁾



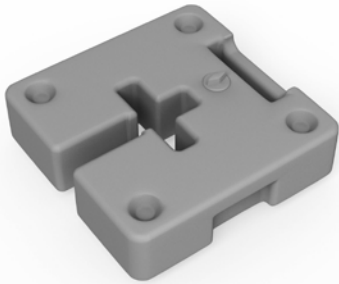
vispronet®



Frame				
	<ul style="list-style-type: none"> · High-quality aluminum frame, silver anodized, frame depth: 120 mm · 2 side feet included · Factory pre-assembled LED components with low heat development · LED lighting with a lifespan of up to 22,000 hours 			
Print				
	<p>Material:</p> <ul style="list-style-type: none"> · Lighttex SE, approx. 260 g/m² <p>Finish:</p> <ul style="list-style-type: none"> · Cut all around and fitted with flat piping for attachment to the aluminum frame 			
Size		Portrait format	Landscape format	Square
	System height (W x H)	40 - 310 cm	40 - 250 cm	40 - 300 cm
	System width (W x H)	40 - 300 cm	40 - 350 cm	40 - 300 cm
	Foot variant	2 side feet	2 side feet	2 side feet
Delivery content				
	<ul style="list-style-type: none"> · Print, frame profiles pre-assembled with LED components and corner connectors, 2 side feet (for self-assembly) 			



All sizes are approximate. As we are constantly developing our products we reserve the right of changing technical issues and dimensional deviations.



Plastic weight, water-fillable, 7.5 l

- Universal weight for additional stabilization of Display Wall Basic, Display Wall Basic Curved, Display Wall Basic Double Arch
- Plastic, silver-grey
- With practical carrying handle, stackable
- Size (W x H x D): 37 x 12 x 37 cm
- Capacity approx. 7.5 l water, cannot be used in sub-zero temperatures



Water-fillable weight, 10 l

- \varnothing outside 53 cm, \varnothing inside 11 cm
- Capacity approx. 10 l water, cannot be used in sub-zero temperatures
- Suitable for base plates with Display Wall Basic, Display Wall Basic Curved, Display Wall Basic Double Arch



Stackable weight plate 18 x 20 cm, 5 kg

- Applicable especially for outdoor use
- Water-fillable weights with flexible surface, individually stackable
- Suitable for Display Wall Basic, Display Wall Basic Curved, Display Wall Basic Double Arch



Base plate 30 x 30 cm / 4.3 kg

- Steel, powder-coated, silver-grey
- Weight approx. 4.3 kg
- Incl. mandrel 7.5 cm, \varnothing 16.6 mm and adapter
- Can be used: as a base element for Display Wall Basic, Display Wall Basic Curved, Display Wall Basic Double Arch



Transport bag for base plates

- Robust transport bag, polyester
- Size: 31 x 19 x 5 cm: for transport of 2 base plates size 18 x 30 cm
- Size: 31 x 31 x 5 cm: for transport of 2 base plates size 30 x 30 cm



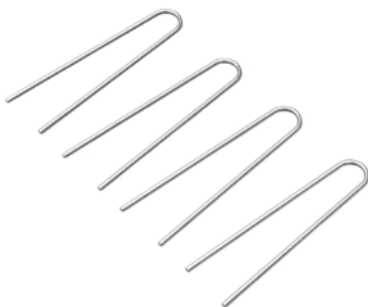
Universal bag 160

- High-quality transport bag made of robust fabric and reinforced corners
- Adjustable shoulder strap and handles on two sides
- Lid with pockets, underside with 4 plastic feet
- Internal elastic bands for fixation
- Internal dimensions: 160 x 26 x 8 cm
- Suitable for Display Wall Basic, Display Wall Basic Curved, Display Wall Basic Double Arch



Transport bag for rods

- Robust fabric bag made of polyester fabric
- With separate compartments for rod segments and prints
- Size approx. 160 x 30 cm
- Suitable for Display Wall Basic, Display Wall Basic Curved, Display Wall Basic Double Arch



U-shaped ground hook 25 cm, set of 4

- Set: 4 ground hooks for use on unpaved surface
- Galvanized steel, length approx. 25 cm
- Suitable for Display Wall Basic Double Arch (mesh)



Guy Set

- Set: 2 tent hooks, 2 guy ropes, 2 adjustment plates, 1 clamp
- Tent hook: length: 30 cm
- Guy ropes with 1 loop each: length 1.5 m, \varnothing 4.5 mm
- Clamp: \varnothing 25 mm
- Suitable for use with Display Wall Double Arch, Mesh



Tension rubber with click locks

- For bracing eyeleted advertising tarpaulins and banners
- Set: 4 elastic straps with click quick-release locks
- Coated, black
- Length: 200mm
- Suitable for eyelets from \varnothing 10 mm (use with Display Wall Double Arch, Mesh)



Halogen spot

- 150 W halogen spotlight
- Incl. power connection cable
- Suitable for Display Wall Q-Frame®



LED spot

- LED spot 24 W
- Black or silver powder coated
- Incl. transformer & power connection cable
- Suitable for Display Wall Q-Frame®

ACCESSORIES



Special gloves, set of 2

- Set: 2 pairs of special cotton gloves
- For gentle treatment of sensitive print products
- Lint-free and washable
- Size L

NOTE

- 1) For technical reasons, there is an approx. 4 cm wide unlit edge (shadow edge) on the back of the display wall. The light temperature of the LEDs (6000-7000K) can in individual cases lead to a colour change in the print when illuminated.